

Technical data sheet

Product features



Rack conveyor dishwasher 200 racks/hour cold water, right exit

| | | |
|--------------------|----------------------------------|-------------------|
| Model | SAP Code | 00014494 |
| A 200 ABT RX M W Y | A group of articles - web | Tunel dishwashers |



- To the product for free: 1x RM Clean+ 12 kg (00012271) and 1x RM Rinse+ 10 kg (00012273)
- Display type: LCD ProSmart soft touch
- Number of programs: 4
- Number of skin: 2
- Maximal rack feed [racks/h]: 200
- Door clear height [mm]: 450
- Rack size [mm]: 500 x 500
- Water consumption of the washing cycle [l/basket]: 0,8 - 1,4
- Washing cycle time [s/basket]: 18 - 37
- Detergent and rinse pump system: ProDose - accurate dosing with a peristaltic pump
- Wash pump type: two-way - DuoFlow
- Detergent dispenser: Yes
- Rinse aid dispenser: Yes

| | | | |
|------------------------------|--------------------|--|-----------|
| SAP Code | 00014494 | Boiler power [kW] | 16.000 |
| Net Width [mm] | 1701 | Basin volume [l] | 70 |
| Net Depth [mm] | 770 | Tank power [kW] | 10.500 |
| Net Height [mm] | 1615 | Water consumption of the washing cycle [l/basket] | 0,8 - 1,4 |
| Net Weight [kg] | 193.00 | Washing cycle time [s/basket] | 18 - 37 |
| Power electric [kW] | 30.200 | Maximal rack feed [racks/h] | 200 |
| Loading | 400 V / 3N - 50 Hz | Door clear height [mm] | 450 |
| Boiler capacity [l] | 17.00 | Rack size [mm] | 500 x 500 |

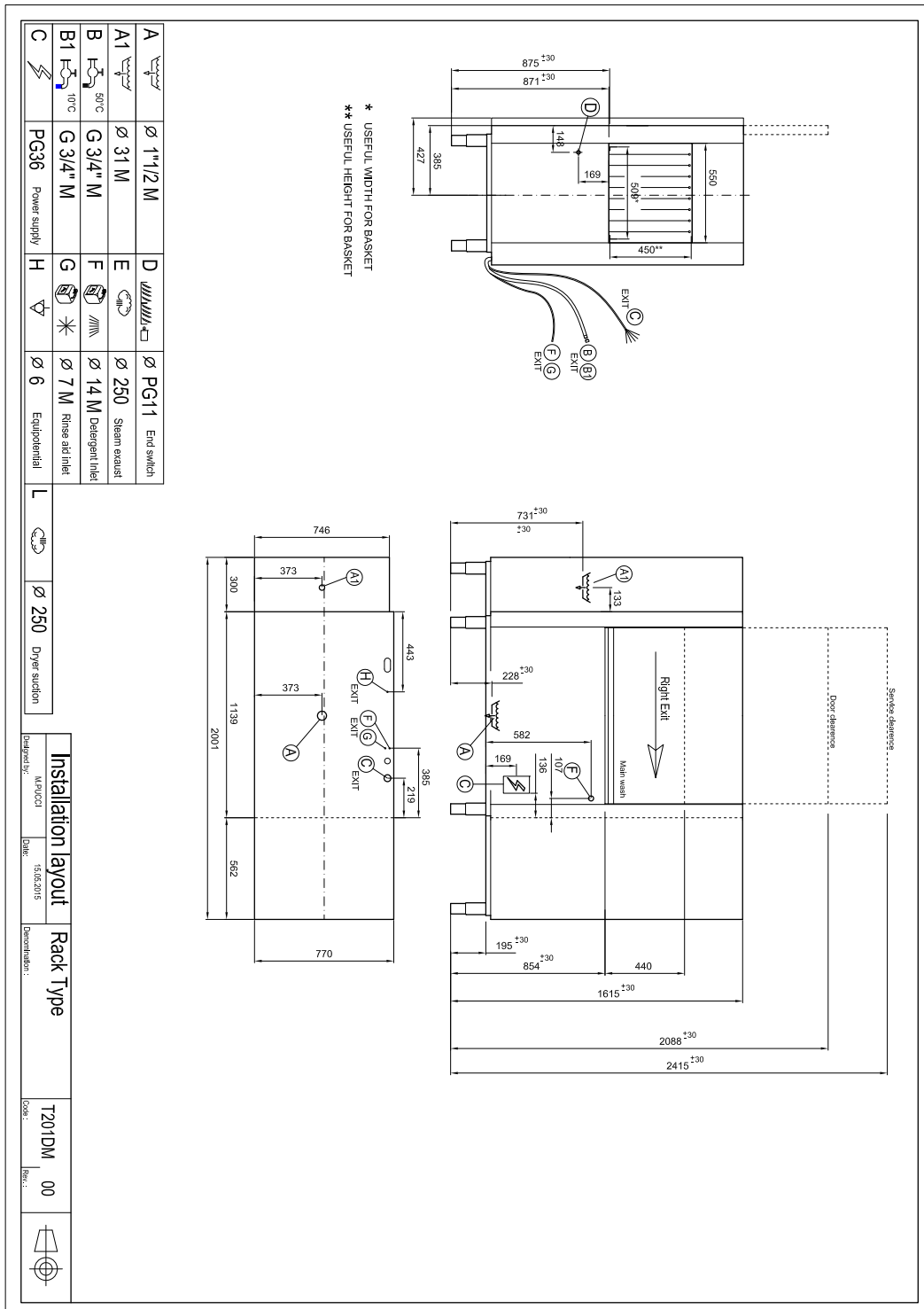
Technical data sheet

Technical drawing



Rack conveyor dishwasher 200 racks/hour cold water, right exit

| | | |
|--------------------|----------------------------------|-------------------|
| Model | SAP Code | 00014494 |
| A 200 ABT RX M W Y | A group of articles - web | Tunel dishwashers |



Technical data sheet

Product benefits



Rack conveyor dishwasher 200 racks/hour cold water, right exit

| | | |
|--------------------|----------------------------------|-------------------|
| Model | SAP Code | 00014494 |
| A 200 ABT RX M W Y | A group of articles - web | Tunel dishwashers |

1 **Stainless steel outer shell construction**
round construction with stainless steel, rounded edges, Deep-drawn bathtub
– easy cleaning, high hygiene standard, long service life

2 **LED Display**
proScreen 4 local display + 2 LED strips
– easy control of the dishwasher operation
– continuous information on the status of the wash cycle
– diagnostics in the event of a fault

3 **Detergent dispensers**
two detergent and rinse aid dispensers
– precise chemical dosing by ProDose - precise dosing system for detergent and rinse aid by peristaltic pump setting of values via control panel

4 **Double filter system**
the chamber filter and the waste filter together with the ArchiMedes system provide a discharge system with increased water purification efficiency
– higher washing efficiency; longer life of the washing bath

5 **Energy saving**
Energy Saving energy saving system due to lowering the temperature of the boiler
– cost saving

6 **Protection of fragile dishes**
softStart system of gradual start of washing programs to protect fragile dishes
– protects stemmed glasses and other fragile utensils

7 **Possibility of recovery**
saving up to 40% of boiler energy
improves the comfort environment of the workplace environment without steam
saves water
– saving on energy and water costs; environmentally friendly system; safe system; pleasant workplace

8 **Fast heating**
Performance management allows the current running of the boiler and basins body
– quick first warm-up of the dishwasher
– smooth operation

9 **Air break tank**
the open system of the boiler rinse, in cooperation with the rinse pump, ensures a constant pressure and temperature of the rinse
– possibility to use in HACCP systems water temperature suitable for sterilization

10 **Sliding system**
a sliding system that moves the baskets through individual washing zones, the possibility to connect the drive to automatic tables
– quick distribution of dirty dishes

Technical data sheet

Technical parameters



Rack conveyor dishwasher 200 racks/hour cold water, right exit

| | | |
|--------------------|----------------------------------|-------------------|
| Model | SAP Code | 00014494 |
| A 200 ABT RX M W Y | A group of articles - web | Tunel dishwashers |

1. SAP Code:

00014494

2. Net Width [mm]:

1701

3. Net Depth [mm]:

770

4. Net Height [mm]:

1615

5. Net Weight [kg]:

193.00

6. Gross Width [mm]:

2100

7. Gross depth [mm]:

920

8. Gross Height [mm]:

1850

9. Gross Weight [kg]:

230.00

10. Device type:

Electric unit

11. Control type:

Digital

12. Material:

AISI 304

13. Power electric [kW]:

30.200

14. Loading:

400 V / 3N - 50 Hz

15. Number of programs:

4

16. Opening of device:

Retractable up

17. Door clear height [mm]:

450

18. Inlet pressure [bar]:

1-4

19. Adjustable feet:

Yes

20. Number of skin:

2

21. Modular construction:

Yes

22. Pre-wash module:

No

23. Maximal rack feed [racks/h]:

200

24. Self-cleaning cycle:

No

25. Boiler capacity [l]:

17.00

26. Boiler power [kW]:

16.000

27. Basin volume [l]:

70

28. Tank power [kW]:

10.500

Technical data sheet

Technical parameters



Rack conveyor dishwasher 200 racks/hour cold water, right exit

| | | |
|--------------------|----------------------------------|-------------------|
| Model | SAP Code | 00014494 |
| A 200 ABT RX M W Y | A group of articles - web | Tunel dishwashers |

29. Number of washing arms:

5

30. Number of rinsing arms:

6

31. Washing arm type:

Firm

32. Washing arm material:

Stainless steel

33. Atmospheric boiler with rinse pump:

Yes

34. Rinsing arm type:

Firm

35. Rinsing arm material:

Stainless steel

36. Deep drawn tank:

Yes

37. Rack support:

welded

38. Tank surface strainers:

stainless steel

39. Boiler thermostat adjust:

Yes

40. Rack feed capacity:

95-150-200

41. Detergent and rinse pump system:

ProDose - accurate dosing with a peristaltic pump

42. Hot water electric valve:

Yes

43. Rack size [mm]:

500 x 500

44. Min supply water temperature [°C]:

10

45. Max supply water temperature [°C]:

40

46. Display type:

LCD ProSmart soft touch

47. USB port:

Yes, for Firmware actualisation

48. Self-diagnostics:

Yes

49. Double rinse:

Yes

50. Wash pump type:

two-way - DuoFlow

51. Detergent dispenser:

Yes

52. Rinse aid dispenser:

Yes

53. Water consumption of the washing cycle [l/basket]:

0,8 - 1,4

54. Washing cycle time [s/basket]:

18 - 37

55. Rinse water temperature [°C]:

82

56. Standard equipment for device:

1x glass basket, 1x plate basket, 1x cutlery basket

Technical data sheet

Technical parameters



Rack conveyor dishwasher 200 racks/hour cold water, right exit

| | | |
|--------------------|----------------------------------|-------------------|
| Model | SAP Code | 00014494 |
| A 200 ABT RX M W Y | A group of articles - web | Tunel dishwashers |

57. Program ProSpeed:

No

58. Program ProFessional:

No

59. Program ProFessional 2:

No

60. Program ProFessional 4:

No

61. Program ProFessional 6:

No

62. Program ProFessional 8:

No

63. Program ProFessional 10:

No

64. Program ProTemp:

No

65. Program ProSelf:

No

66. Program ProClean:

No

67. Program ProDrain:

No

68. Program ProEco:

No

69. Program ProNew:

No

70. Program ProLong:

No

71. Program ProGlass:

No

72. Program ProPlates:

No

73. Program ProCold:

No

74. Program ProWater:

No

75. Program ProActive:

No

76. Program ProActive 5:

No

77. Program ProActive 7:

No

78. Program ProSteel:

No

79. Program ProSan:

No

80. Program High Capacity:

Yes

81. Program General purpose:

Yes

82. Program Prolonged contact (DIN 10534):

Yes

83. Program Glasses:

Yes

84. Cross-section of conductors CU [mm²]:

16

Technical data sheet

Technical parameters



Rack conveyor dishwasher 200 racks/hour cold water, right exit

| | | |
|--------------------|----------------------------------|-------------------|
| Model | SAP Code | 00014494 |
| A 200 ABT RX M W Y | A group of articles - web | Tunel dishwashers |

85. Water supply connection:

3/4"

86. Diameter nominal:

DN 50